

33.

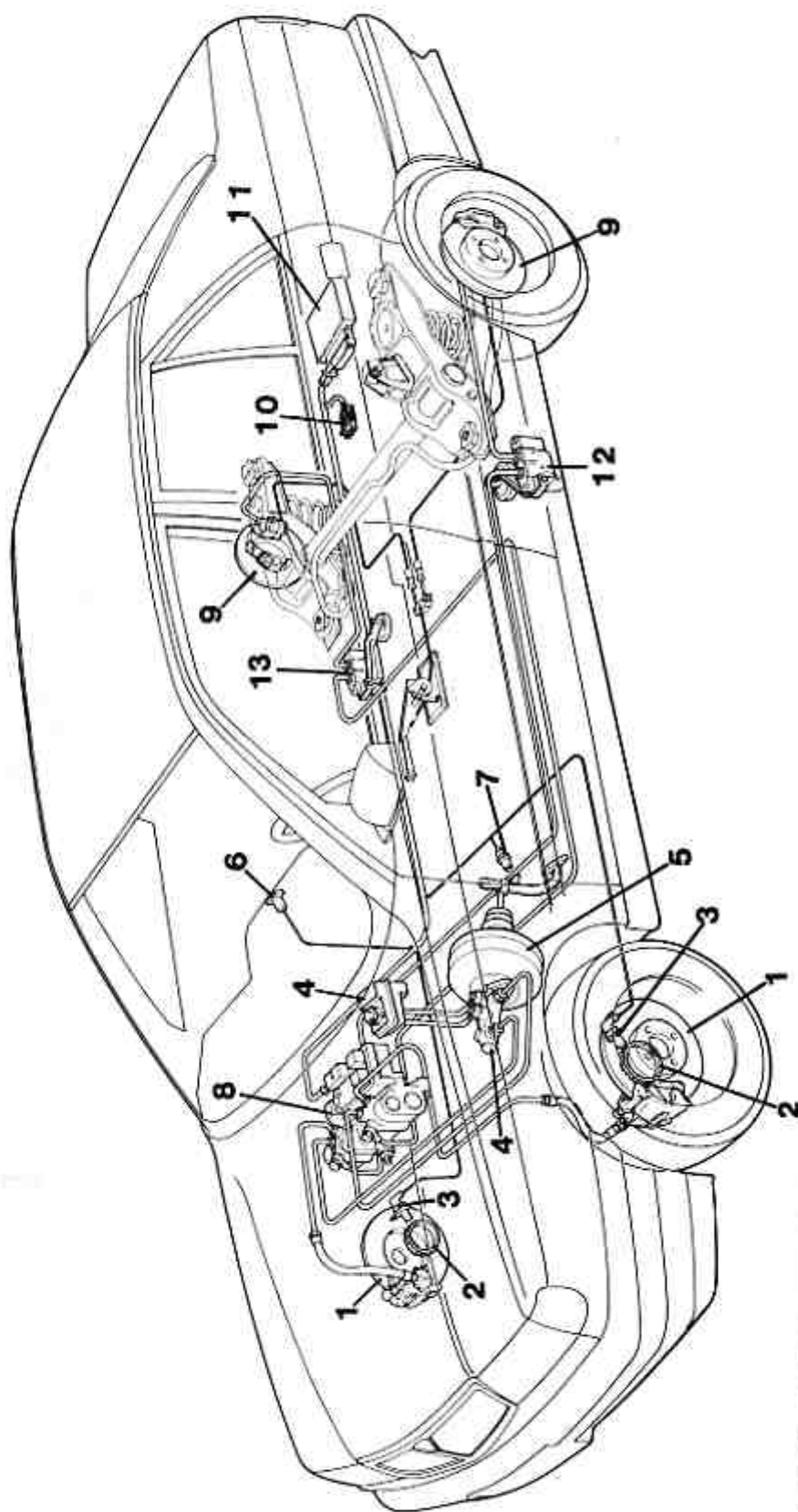


DIAGRAM OF BRAKING SYSTEM WITH LUCAS-GIRLING ABS 2/2 ANTI-LOCK BRAKE SYSTEM

- |  |                                 |  |
|--|---------------------------------|--|
| 1. Front disc brakes   | 6. Device failure warning light | 12. Load proportioning valve for right front wheel and left rear wheel circuit |
| 2. Phonic wheel  | 7. Brake light switch           | 13. Load proportioning valve for left front wheel and right rear wheel circuit |
| 3. Rpm sensor  | 8. Hydraulic control unit       |  |
| 4. Brake fluid reservoir and brake master cylinder for independent front and rear circuits | 9. Rear disc brakes             |  |
| 5. Vacuum brake servo  | 10. Diagnostic socket           |  |
|  | 11. Electronic control unit     |  |

P20028D01